



DELHI PUBLIC SCHOOL, CHANDIGARH

Summative Assessment-I, Session 2014-15
Class : VIII, Subject : Science (Sample Paper)

Time : 3 hours

MM : 90

Section-A (Physics)

Q1 Choose and write the correct option: (1 x 4 = 4)

- (i) An image is formed in
- (a) regular reflection (b) diffused reflection
- (c) irregular reflection (d) none
- (ii) When two plane mirrors are held at an angle of 60° , the number of images formed are
- (a) 5 (b) 6

- (c) 3 (d) 4
- (iii) A liquid which splits into ions when electric current is passed through it is called
- (a) conductor (b) insulator
- (c) electrolyte (d) none
- (iv) The SI unit of pressure is
- (a) kg/m^3 (b) kg/m^2
- (c) pascal (d) Newton

Q2. Give one word answer: (1 x 4 = 4)

- (a) The bouncing back of a ray of light after striking a surface
- (b) Process of depositing a layer of desired metal on another material by mean of electricity
- (c) Force per unit area
- (d) Pressure exerted by the atmosphere of the earth

Q3. Give reasons: (2 x 2 = 4)

- (a) Bleeding through nostrils occurs at high altitude
- (b) No image is formed when diffused reflection takes place

Q4. Answer the given questions (2x2 =4)

- (a) Draw a diagram to show image formation by a plane mirror
- (b) Name the forces acting on a plastic bucket containing water held above the ground level in your hand. Discuss why the forces acting on the bucket do not bring changes in its state of motion.

Q5. Answer the given questions (3x3=9)

- (a) On what factors does effect of force depend? Give one difference between muscular force and gravitational force

- (b) Why is iron electroplated with tin to make cans for storing food? Name any 4 objects that are electroplated.
- (c) List 3 ways to take good care of your eyes
- Q6. (a) Draw a labelled diagram to show electroplating using copper. (2)
- (b) Write the reaction showing dissociation of copper sulphate. (1)
- (c) During electrolysis of copper sulphate, why do copper ions move towards negative terminal? (2)

Section-B (Chemistry)

Q7. Choose and write the correct option: (1 x 4 = 4)

- (i) Carbonisation is
- (a) Slow conversion of dead vegetation into coal
- (b) Deposition of soil
- (c) Falling of trees
- (d) None of these
- (ii) Which non-metal is a liquid at room temperature?
- (a) Iodine (b) Bromine
- (c) Sulphur (d) Carbon
- (iii) First synthetic fibre made entirely out of chemicals was:
- (a) Acrylic (b) Nylon
- (c) Rayon (d) Polyester
- (iv) Which of the following metals is the best conductor of electricity?
- (a) Copper (b) Silver
- (c) Aluminium (d) Gold

Q8. Give one word / name / example: (1 x 4 = 4)

- a) A green substance formed on corrosion of copper
- b) Ultimate source of energy available to us.
- c) An important raw material for dyes and synthetic fibres
- d) The black material inside a pencil

Q9. Answer the following: (2 x 4 = 8)

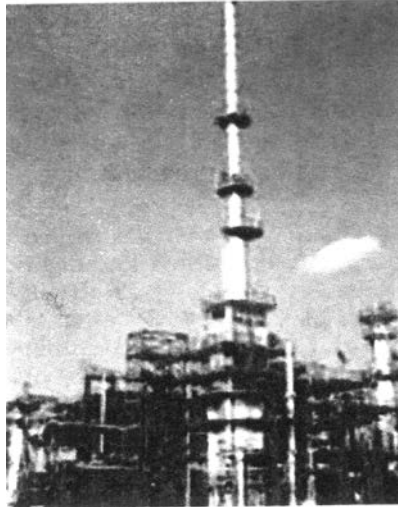
- a) Cooking utensils are usually made of copper and aluminium. Explain why?
- b) Why are blended fibres preferred over synthetic fibres?
- c) What is displacement reaction? Give one example.
- d) Discuss any two problems related to plastic disposal

Q10. Answer the following: (3 x 3 = 9)

- a) Give any three characteristics of synthetic fibres.

- (b) Name the three products obtained on processing of coal. Give one use of each.
- (c) What is an alloy? Give one example of alloy. How is an alloy useful over pure metal?

Q11. (a) Identify and name the figure. Define the process carried out here. (2)



- (b) What are the advantages of using CNG and LPG as a fuel? Give full form of CNG and LPG. (3)

Section-C (Biology)

Q12. Choose the correct option: (1 x 4 = 4)

- (i) The cell organelle found only in plant cells is
- | | |
|-----------------|------------------|
| (a) Chloroplast | (b) Mitochondria |
| (c) Vacuole | (d) Nucleus |
- (ii) The biodiversity of a region includes
- | | |
|--------------------|------------------|
| (a) Plants | (b) Animals |
| (c) Microorganisms | (d) All of these |
- (iii) The zygote divides repeatedly to form
- | | |
|------------|-----------|
| (a) Embryo | (b) Ovum |
| (c) Ovary | (d) Sperm |
- (iv) Oil gland is also called
- | | |
|---------------------|--------------------|
| (a) Sebaceous gland | (b) Sweat gland |
| (c) Endocrine | (d) Salivary gland |

Q13. Give one word / name / example: (1 x 4 = 4)

- (a) A cell that helps to control and coordinate the working of different parts of the body.
- (b) Species of all plants of a particular area.
- (c) Female reproductive cell.
- (d) Protruding part of the throat.

Q14. Give reason:

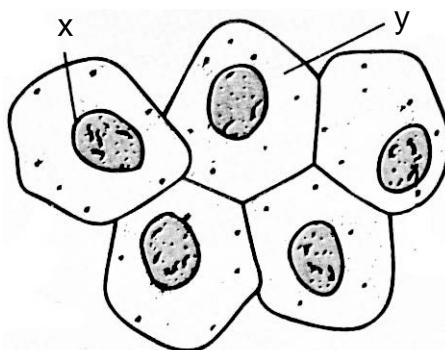
(2 x 4 = 8)

- (a) The plant cells have a cell wall outside the plasma membrane.
- (b) Even protected forests are not completely safe for wild animals.
- (c) Layer of jelly is present around the eggs of the frog.
- (d) Pituitary gland is an endocrine gland.

Q15. Answer the following

(a) Observe the diagram given below:

(2+1=3)



- i) Label parts x and y.
- ii) Name the part of the human body to which these cells belong

(b) (i) What is an ecosystem?

(1+2=3)

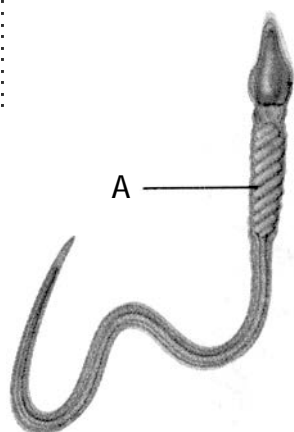
(ii) Define migration. Why do birds migrate?

(c) List three physical changes that take place in girls at puberty.

(3)

(d) (i) Observe the diagram and answer the questions given below:

(2+1+2=5)



- 1) Identify and name the reproductive cell.
- 2) Label the part A.

(ii) What is the importance of reproduction in organisms?

(iii) What is the importance of in-vitro fertilization?