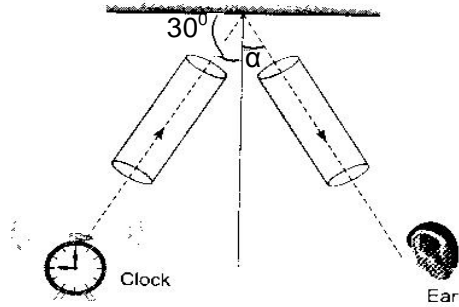


- Q.11** What are the advantages of classifying organisms? (3)
- Q.12** Name the largest group of animals. Write the salient features of this group. (½+1½+1=3)
Give two examples.
- Q.13** a) Which disease is more harmful-acute or chronic disease? Why? (2+1=3)
b) Why are we advised to take bland and nourishing food when we are sick?
- Q.14** How do the following factors contribute in the formation of soil? (1+1+1=3)
a) wind b) water c) sun
- Q.15** Pooja's school organised a field trip. Pooja along with her (2+½+½=3) classmates visited the chemical, fertilizer and cast iron industries. She found that almost all the industries were releasing their effluents in the nearby canal water. She noticed that canal water was being polluted and it was unfit for consumption. She wrote a letter to the pollution control board and took the initiative to prevent water pollution.
- a) What does water pollution mean and what are the various causes of water pollution?
b) Which values are displayed by Pooja in taking initiative?
c) Suggest some school activity to promote such values in school students.
- Q.16** a) The volume of 50g substance is 20cm³. Find the density of the substance. (1)
If the density of water is 1 g/cm³, will the substance float or sink?
b) Why does an object float or sink when placed on the surface of water? (2)
- Q.17** What is meant by potential energy? Derive the expression for gravitational potential energy of a body of mass m placed at a height 'h' above the surface of the earth (3)
- Q.18** Cite an experiment to show that sound needs a material medium for its propagation. (3)
- Q.19** a) State Archimedes principle. (3)
b) Write any two applications of Archimedes principle.
- Q.20** Give reasons for the following : (5)
a) Elements have generally fractional atomic masses.
b) Isobars always belong to different elements.
c) Noble gas elements do not show any valency.
d) Nucleus of an atom is heavy and positively charged.
e) Atom as a whole is electrically neutral.
- Q.21** a) Draw a flow chart to show different divisions of kingdom plantae. (1½)
b) Which division has the simplest plants? (1)
c) To which division pinus and cycas belong? (1)
d) What is the other name given to the flowering plants? Classify them on the basis of number of cotyledons present in the seed. (1½)

placed as shown. In order to hear the reflected sound, the second tube should be placed such that α equals.

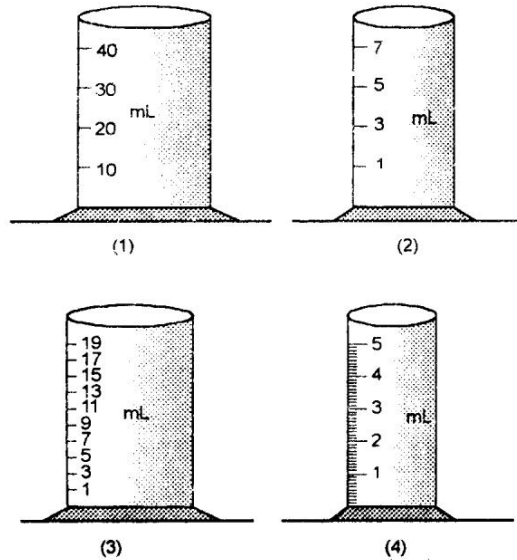


- a) 30° b) 40° c) 60° d) 90°

Q.28 In an experiment to verify, the law of reflection of sound, reflector should be made of - (1)

- a) card board b) wood
c) cloth d) polished metal sheet

Q.29 The most suitable cylinder for measuring the volume of nearly 1.5 ml liquid is- (1)

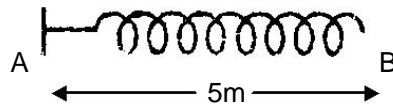


- a) (1) b) (2) c) (3) d) (4)

Q.30 Relative density of silver compared to that of water is 10.5, density of silver is- (1)

- a) 10.5 kg/m^3 b) 105 kg/m^3
c) 1050 kg/m^3 d) 10500 kg/m^3

Q.31 A pulse took 5 sec to travel from A to B then back to A. The velocity of pulse for slinky indicated in figure is - (1)



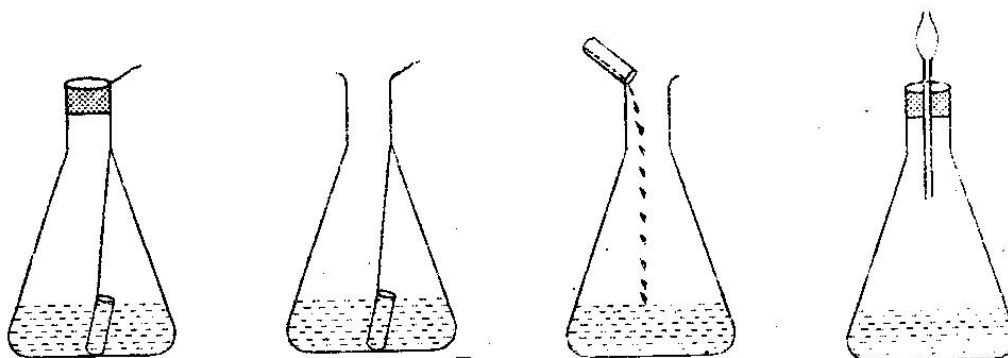
- a) 5 m/s b) 2 m/s c) 10 m/s d) 1.1 m/s

- Q.32** In the experiment for determining the velocity of propagation of a pulse in a string, we prefer a long string because – (1)
- a) It is easy to hold it.
 - b) it is easy to give jerk
 - c) pulse may move through it easily
 - d) time taken by pulse to move from one end to other should be easily recorded

- Q.33** A cuboid of iron is kept over a table with different faces touching the table. In different cases the cuboid exerts. (1)
- a) same thrust and same pressure
 - b) same thrust and different pressure
 - c) different thrust and same pressure
 - d) different thrust and different pressure

- Q.34** The unnecessary observation to find pressure of solid is – (1)
- a) least count of the spring balance
 - b) zero error in the spring balance
 - c) mass of solid in air
 - d) volume of solid

- Q.35** To verify the law of conservation of mass the correct experimental set up is – (1)



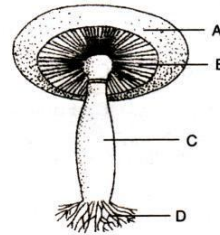
- a) set up A b) set up B c) set up C d) set up D

- Q.36** While verifying the law of conservation of mass in a chemical reaction using a precipitation reaction, Savita carried out the following procedure : (1)
- i) Dissolved the required quantities of BaCl_2 and Na_2SO_4 in distilled water taken in two separate beakers.
 - ii) Determined the mass of both solutions separately.
 - iii) Mixed both solutions in a third beaker using a glass stirrer.
 - iv) Determined the mass of white precipitate formed after mixing both the solutions. The wrong step in the procedure is :
- (a) step (i) (b) step (ii)
 - (c) step (iii) (d) step (iv)

- Q.37** The first segment in the body of earthworm is called : (1)
- a) prostomium b) clitellum
c) peristomium d) annuli

- Q.38** Parts of Agaricus labelled as A, B, C and D are : (1)

- a) pileus, gills, stipe, hyphae
b) pileus, hyphae, gills, stipe
c) pileus, stipe, gills, hyphae
d) pileus, gills, hyphae, stipe



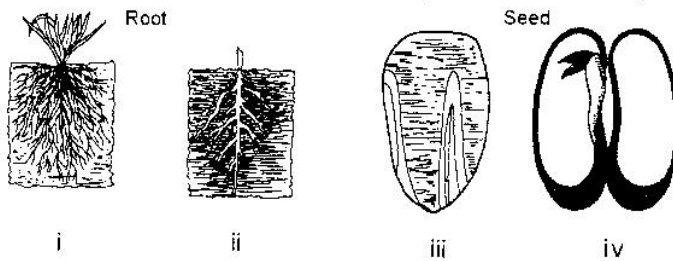
- Q.39** A student found the posterior part of a male cockroach in the laboratory. The following sketch was made. The missing part in the sketch is : (1)

- a) anal cerci
b) anal style
c) brood pouch
d) antennae



- Q.40** Chloroplast in spirogyra is : (1)
- a) spirally arranged without pyrenoids
b) spirally arranged in ribbon shape with pyrenoids
c) circular
d) cup shaped

- Q.41** Identify the dicots from the following sketches : (1)



- a) i and iii b) ii and iii
c) i and iv d) ii and iv

- Q.42** Mosquito belongs to phylum – (1)
- a) mollusca b) arthropoda
c) coelenterata d) annelida

