

- 1) What is the branch of biology that deals with algae called?
- a) Psychology
 - b) Cytology
 - c) Phycology ✓
 - d) Algology
- 2) Which division amongst the plants has the simplest organisms?
- a) Bryophyte
 - b) Thalophyta ✓
 - c) Gymnosperm
 - d) Pteridophytes
- 3) Spores produced by *Agaricus* sp. is termed as
- a) Basidiospores ✓
 - b) Megasporengia
 - c) Microsporengia
 - d) Zygosporangia
- 4) The first vascular plant known to have formed on land is
- a) Algae
 - b) Pteridophytes ✓
 - c) Bryophytes
 - d) Gymnosperms
- 5) In which of the following are winged pollen grains found?
- a) Ferns
 - b) *Pinus* ✓
 - c) Mango
 - d) Orchid
- 6) Naked ovule as reproductive organs is the characteristic feature of which class of plants?
- a) Bryophytes
 - b) Pteridophytes
 - c) Gymnosperms ✓

- d) Angiosperms
- 7) Why are ferns considered more advanced than mosses?
- a) Presence of vascular tissues ✓
 - b) Having rhizoids.
 - c) Flowers.
 - d) Independent sporophyte.
- 8) How many cotyledons does a seed of Pinus have?
- a) Two
 - b) Absent
 - c) Many ✓
 - d) One
- 9) How many cotyledons do seeds of monocot plants have?
- a) One ✓
 - b) Two
 - c) Many
 - d) Three
- 10) Flowering plants are known as _____.
- a) Angiosperm ✓
 - b) Pteridophytes
 - c) Thalophytes
 - d) Gymnosperm
- 11) How many cotyledons does a dicot plant have?
- a) Many
 - b) Two ✓
 - c) Three
 - d) One
- 12) Which are the first seeded plants known to have formed on land?
- a) Gymnosperms ✓
 - b) Algae
 - c) Bryophytes
 - d) Pteridophytes

13) What is the root-like structure of the fern called?

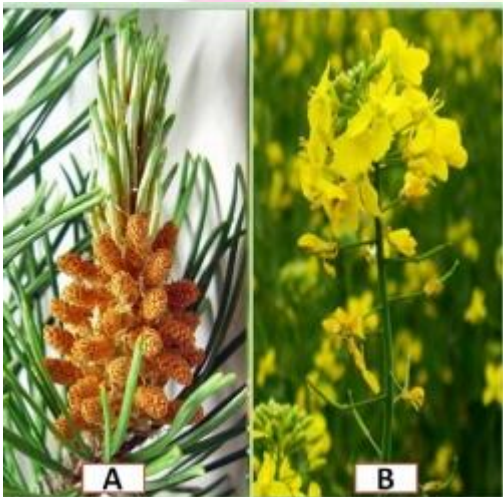
- a) Rhizoids ✓
- b) Roots
- c) Tap roots
- d) Adventitious root

14) Review the images of the two plants given below. Observe carefully and Identify them and name the groups to which they belong.



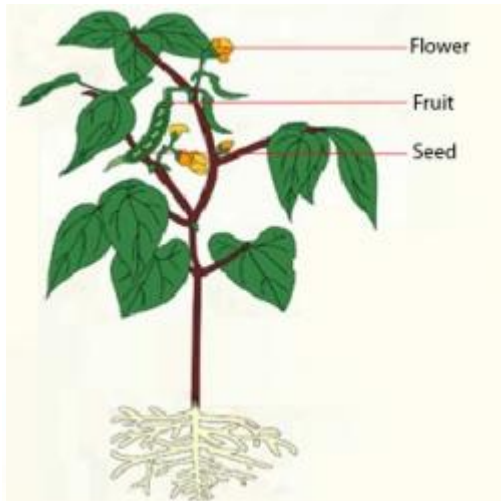
- a) (I) moss; Bryophyte (II) fern; Pteridophyta ✓
- b) Both I and II are ferns and belongs to Bryophyte.
- c) Both I and II are liverworts and belongs to Tracheophyta.
- d) (I) pine; gymnosperm (II) leafy plant; Angiosperm

15) A teacher demonstrated two specimens A and B from the plant kingdom to the student, as given below. Which was the most accurate identification made by the student?



- a) Cone of angiosperm and flower of gymnosperm.
- b) Cone and flower of a Gymnosperm.
- c) Cone and flower of an Angiosperm.
- d) Cone of gymnosperm and flower of angiosperm. ✓

16) A student carefully observes the parts labeled in the given diagram and classifies the plant correctly as _____.



- a) A Pteridophytes
- b) A Bryophyte
- c) An Angiosperm ✓
- d) A Gymnosperm

Answer			
1.c	2.b	3.a	4.b
5.b	6.c	7.a	8.c
9.a	10.a	11.b	12.a
13.a	14.a	15.d	16.c